

Brief overview of AI ST/CVS

(TRUST-CVS joint workshop)

2005.9.21 Kanazawa

Yoshiki Kinoshita

AIST



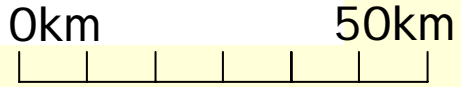
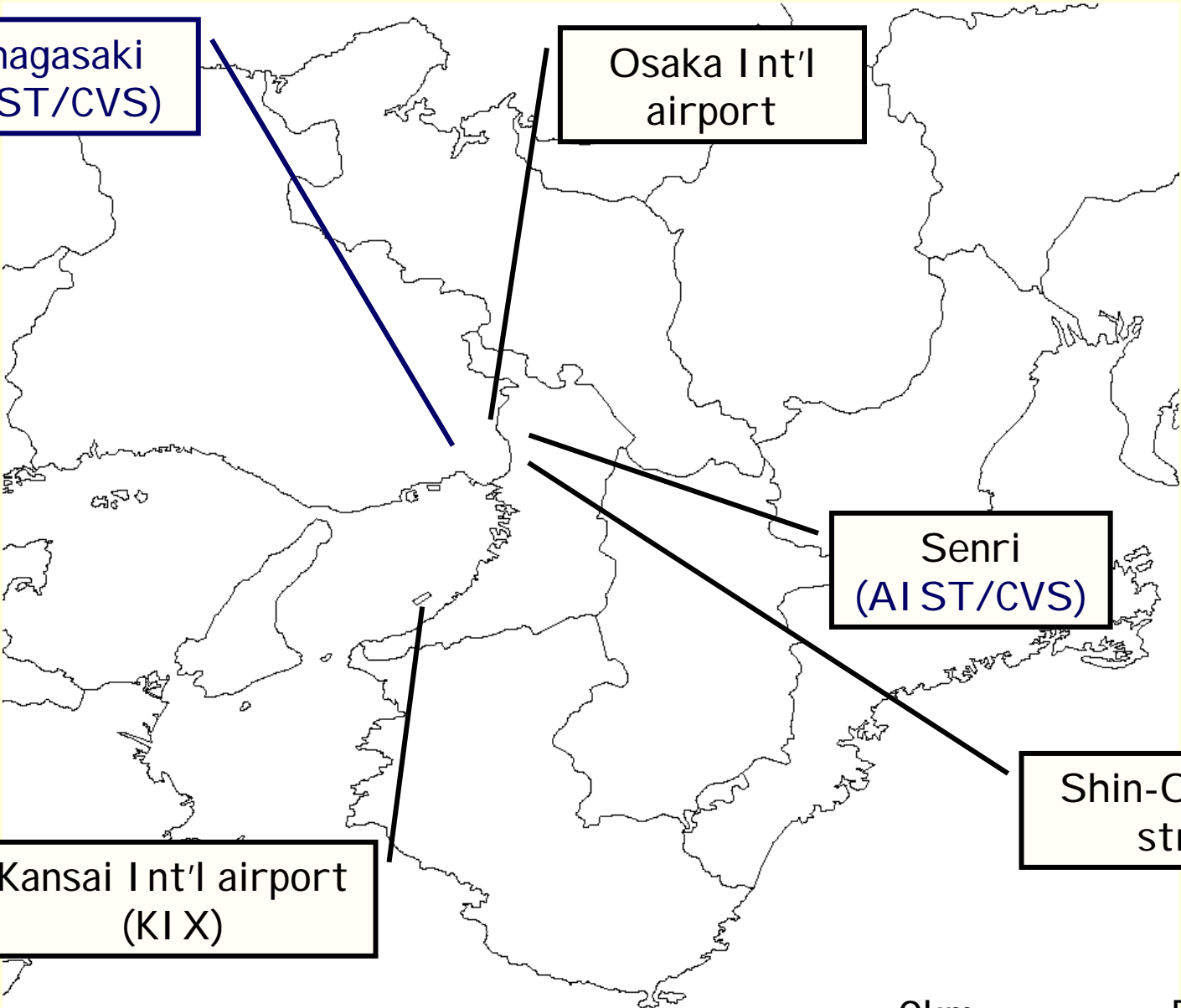
Amagasaki
(AIST/CVS)

Osaka Int'l
airport

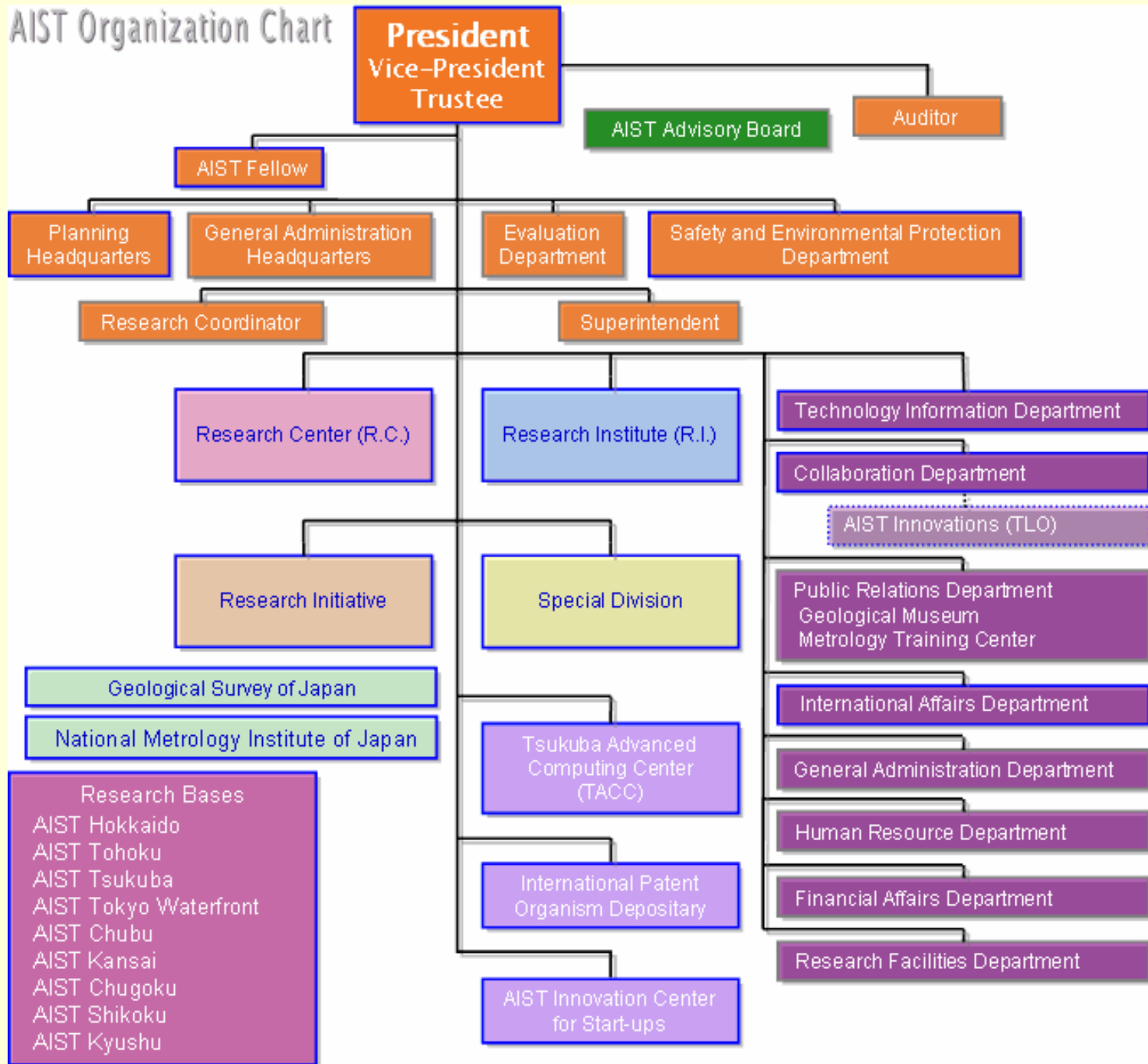
Senri
(AIST/CVS)

Shin-Osaka
stn

Kansai Int'l airport
(KIX)



AIST Organization Chart



Three kinds of “Research Units”

- Research Institute
 - Set up for each field. No term (permanent).
- Research Center
 - “Programme” set up for contemporary topic.
 - Concentrated resources. Up to 7 yrs.
- Research Initiative (Laboratory)
 - Preparatory of a new Center. Up to 3 yrs.

Research Center for Verification and Semantics (CVS) is one of the “Research Centers”

Fieldwork

- Originally, technical word in ethnology (cultural anthropology) and ecology
- Important notion for AI ST/CVS!
- For us, it means jumping into society to collaborate with them, trying to solve specific problems.

AI ST/CVS: to see what happens in society

Partners: to introduce frontier technique into their own work

Scientific Work vs Fieldwork

Scientific work done based on evaluation
in academic judgment

F/W done based on evaluation in the
partners' judgment

Towards bidirectional interaction between
academia \leftrightarrow society

CVS Slogan: F/W : Sci./W = 4 : 6

(4:6 instead of 2:3, because of Japanese linguistic rhythm.)

Core members are expected to be involved in both scientific and fieldwork projects.

Post-docs are expected to concentrate on the (scientific or field work) project which funds them.

Bidirectional flow of information between society (industry) & science

Instead of “teaching duty”, people have “industrial duty”.

AI ST Talks for this Workshop

Koichi Takahashi 高橋孝一:

Abstraction of programs
in PML

Eun-Hye Choi 崔銀惠:

Model checking
Web Specifications

Makoto Takeyama 武山誠:

Towards Agda2

F/W

Sci./W

Toshinori Takai 高井利憲:

TBA

Hitoshi Ohsaki 大崎人士:

ACTAS

FIN