

# Modeling and Verification of Workflows for e-Society

Kunihiko Hiraishi

School of Information Science

Japan Advanced Institute of Science and Technology

## Process Oriented Approach in Business

1990 1995 2000 2005

Business Process Reengineering

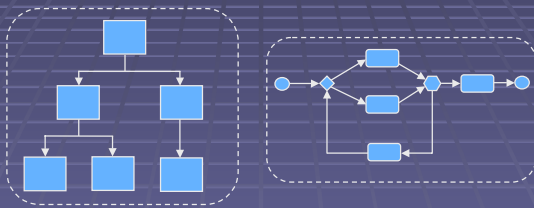
Enterprise Resource Planning

Workflow Management

Enterprise Application Integration

Business Process Modeling

## Process Oriented Approach in Business

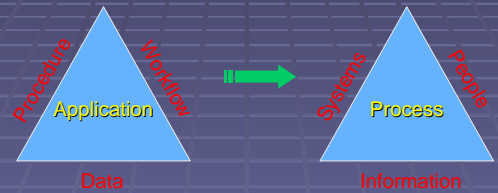


Organization View

Process View

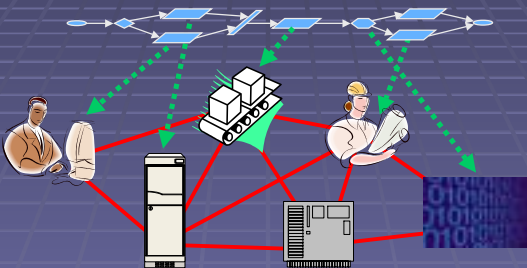
+ Optimal Resource Assignment

## Process Oriented Approach in Business



by Howard Smith, CTO of Computer Science Corporation

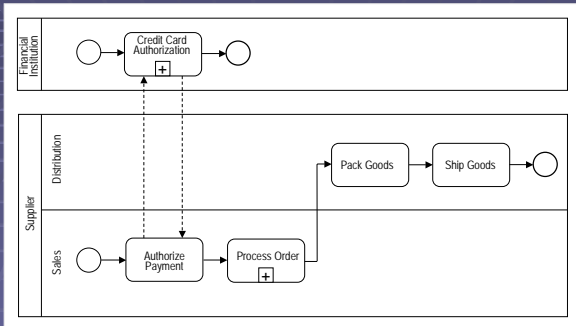
## Workflows Integrate People, Systems and Information



## Business Process Modeling Languages

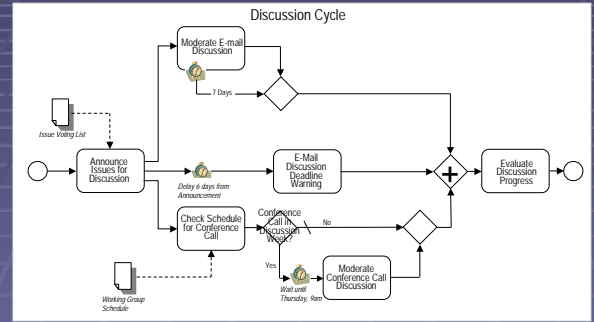
- IDEF (Integrated Definition Method)
- BPMI (Business Process Management Initiative)
  - BPML (Business Process Modeling Language)
  - BPMN (Business Process Modeling Notation)
  - BPQL (Business Process Query Language)
- WfMC (Workflow Management Coalition)
  - Wf-XML
- ebXML (Electronic Business XML)
- UML (Unified Modeling Language) Activity Diagram
- ...

## Example: BPMN



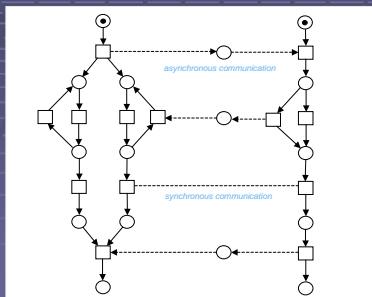
7

## Example: BPMN



8

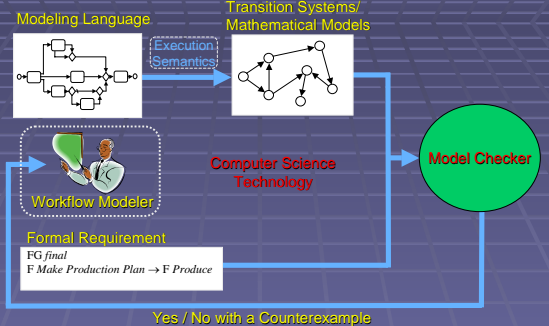
## Background Mathematical Formalism



A Petri-net-based model for interorganizational workflows

9

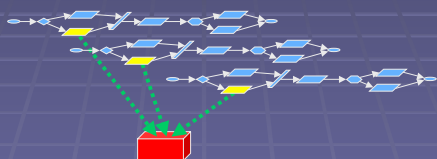
## Formal Verification of Workflow



10

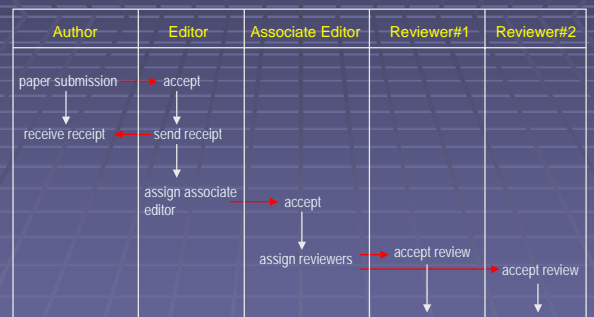
## Performance Evaluation of Workflow

- Each workflow is a template of a business process.
- Many instances of workflows are running in the information system.
- Optimal resource (people, machines, companies, ...) assignment is necessary.



11

## Example: Review Process of an Academic Journal



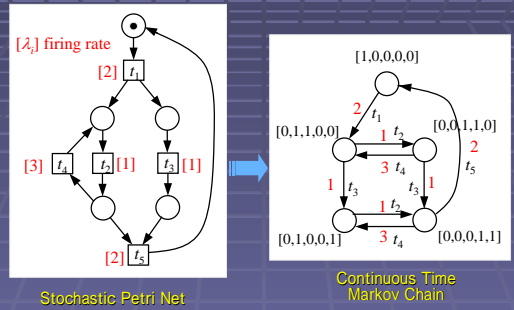
12

## Example: Review Process of an Academic Journal

- **Given:**
  - Workflow
  - Statistical data on paper submission
  - Upper bound of the number of papers each associate editor can handle
- **Find:**
  - Optimal number of associate editors in each research fields
- **Method:**
  - Stochastic Petri net

13

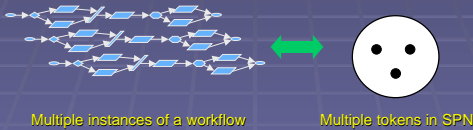
## Example: Review Process of an Academic Journal



14

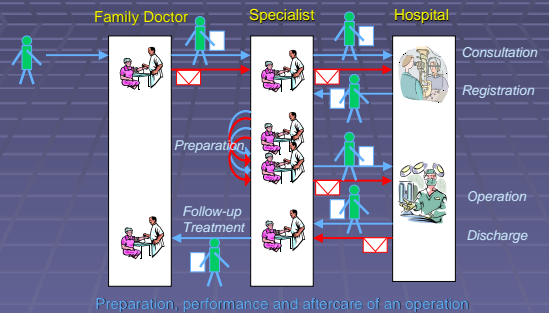
## Example: Review Process of an Academic Journal

- **Statistical data:**
  - Average number of paper submissions per month
  - Average length of review periods
- Using SPN, we can know the number of papers each associate editor must handles on average.



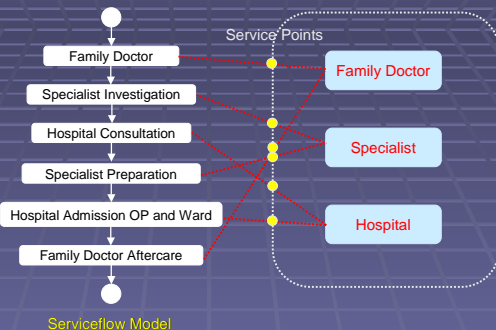
15

## Concept of Serviceflow



16

## Concept of Serviceflow



17

## Concept of Serviceflow

- Serviceflow should have priority over other subprocesses.
- Designing functions available at each service point is important.
- Using concept of serviceflow, we can evaluate the quality of workflows from the customer's point of view.

18

## Summary

- Process oriented approach in business
- Business process modeling languages
- Background mathematical formalism
- Formal verification of workflow
- Performance evaluation of workflow
- Concept of serviceflow